

Skin Flap Model

In cooperation with the university hospitals in Jena, Ulm and the company 3di GmbH a training model was developed for skin flap plastics in the face.



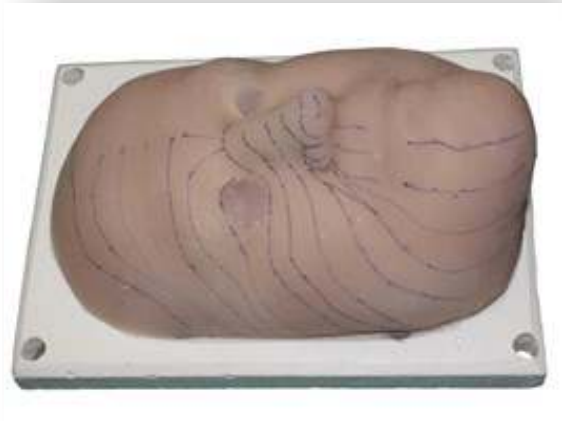
Characteristics

- the skin flap model is an artificial replication of human skin structures
- it consists of a baseplate and a silicone layer which simulates the human skin (5 -10mm) with gauze inserts to improve the stability during the sewing process

Application

- practice of basic suture techniques
- practice of complex skin reconstructions in the facial area
- simulation of operations





Training examples

- draw the relaxed skin tension lines and the aesthetic units

- practice of different suture techniques: intracutaneous suture, back-and-forth suture by Donati and corner suture by Gillies etc.
- excise a Burow's triangle and perform wound closure



- practice of different skin flaps, e.g. Z-plasty, VY-plasty, transposition and rotation flaps, biloped flap

Item number: LPM-1404-001

The baseplate can be laminated again with new silicone layers.
The model will be sent with a training tutorial.